

Delivering knowledge  
based solutions for radical  
plant improvement through  
electrical, control and  
software deployment



**Baytek can give you the knowledge and the tools  
to help your business succeed!**

We can help you:

- Improve productivity
- Reduce wastage
- Monitor and control energy usage
- Reduce carbon emissions
- Identify downtime reasons
- Identify problem areas
- Increase throughput
- Improve quality
- Achieve total visibility of your business
- Manage your assets
- Update legacy equipment

**www.baytek.co.uk**



TEL : 01495 356738 FAX: 01495 356739

EMAIL : info@baytek.co.uk



**The Innovation Centre , Festival Drive , Ebbw Vale. NP23 8XA**

Printed by B&N Printers, Abergavenny

# Treasure Island

written by  
Tony Bradford  
and Tina Webster

Permission given  
by NODA



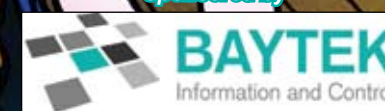
2010

Affiliated to the  
National Operatic and  
Dramatic Association

PROGRAMME  
£1.50



Sponsored by



**MONDAY 15TH - SAT 20TH FEBRUARY 2010**



ABERGAVENTNY PANTOMIME COMPANY IS BELIEVED TO BE THE OLDEST PANTOMIME COMPANY IN WALES.  
STARTING AS 'THE HOLY TRINITY COMPANY' WITH OUR FIRST TRADITIONAL PANTOMIME IN 1932.  
BELOW IS A LIST OF SOME OF OUR PAST PRODUCTIONS:



## ABERGAVENTNY PANTOMIME COMPANY

### Past Productions



1947.....Aladdin	1963.....Sinbad the Sailor	1979.....Cinderella	1995.....Dick Whittington
1948.....Mother Goose	1964.....(no show)	1980.....Aladdin	1996.....Jack and the Beanstalk
1949.....Babes in the Wood	1965.....Babes in the Wood	1981.....Robin Hood	1997.....Cinderella
1950.....Dick Whittington and His Cat	1966.....Goody Two Shoes	1982.....Mother Hubbard	1998.....Aladdin
1951.....Hop O' My Thumb	1967.....Cinderella	1983.....Sinbad the Sailor	1999.....Pied Piper
1952.....Cinderella	1968.....Robinson Crusoe	1984.....Jack and the Beanstalk	2000.....Snow White
1953.....Aladdin	1969.....The Sleeping Beauty	1985.....Cinderella	2001.....Red Riding Hood
1954.....Jack and The Beanstalk	1970.....Humpty Dumpty	1986.....Aladdin	2002.....Robinson Crusoe
1955.....The Sleeping Beauty	1971.....Aladdin	1987.....Robinson Crusoe	2003.....Peter Pan
1956.....Red Riding Hood	1972.....Mother Goose	1988.....Puss in Boots	2004.....Aladdin
1957.....Humpty Dumpty on the Moon	1973.....Sinbad the Sailor	1989.....Winter Review	2005.....Cinderella
1958.....Mother Goose	1974.....Robin Hood	1990.....Mother Goose	2006.....Dick Whittington
1959.....Cinderella	1975.....Jack and the Beanstalk	1991.....Babes in the Wood	2007.....Jack and the Beanstalk
1960.....Dick Whittington	1976.....Puss in Boots	1992.....Sinbad the Sailor	2008.....Sleeping Beauty
1961.....Aladdin	1977.....Robinson Crusoe	1993.....The Sleeping Beauty	2009.....Hansel & Gretel
1962.....Puss in Boots	1978.....Humpty Dumpty	1994.....The Grand Old Duke of York	

FULL LIST OF PAST PRODUCTIONS ARE AVAILABLE ON OUR WEBSITE  
[www.abergavennypantomime.co.uk](http://www.abergavennypantomime.co.uk)



*noda*

Serving Amateur Theatre since 1899



NATIONAL OPERATIC AND DRAMATIC ASSOCIATION

Headquarters: NODA House, 58-60 Lincoln Road, Peterborough. PE1 2RZ  
Telephone: 0870 770 2480 • Fax: 0870 770 2490 • Email: [everyone@noda.org.uk](mailto:everyone@noda.org.uk)

The National Operatic and Dramatic Association (NODA), founded in 1899, is the main representative body for amateur theatre in the UK. It has a membership of some 2500 amateur/community theatre groups and 3000 individual enthusiasts throughout the UK, staging musicals, operas, plays, concerts and pantomimes in a wide variety of performing venues, ranging from the country's leading professional theatres to village halls. Members have access to a wide range of benefits.

knowledgeable and friendly staff able to deal with virtually any enquiry relating to amateur theatre.

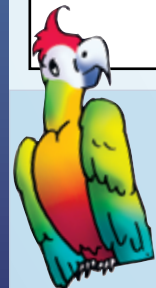
There is a broad spectrum of ages involved with amateur theatre nationwide, from a burgeoning number of youth groups to adult companies, which meet the needs of all levels of both performers, whether dramatic or musical, and enthusiasts involved backstage, front of house or in administration.

NODA is divided into eleven national Regions, each headed by an Region Councillor who sits on the Council (the ruling body of the Association), supported by a network of Regional Representatives and other volunteers. These volunteers are the vital link to the grass roots of the Association, the amateur theatre companies themselves. The Association is administered from its Headquarters in Peterborough, with a

#### NODA AIMS

- To give a shared voice to the amateur theatre sector.
- To help amateur societies and individuals achieve the highest standards of best practice and performance.
- To provide leadership and advice to enable the amateur theatre sector to tackle the challenges and opportunities of the 21st century

- [www.noda.org.uk](http://www.noda.org.uk) -

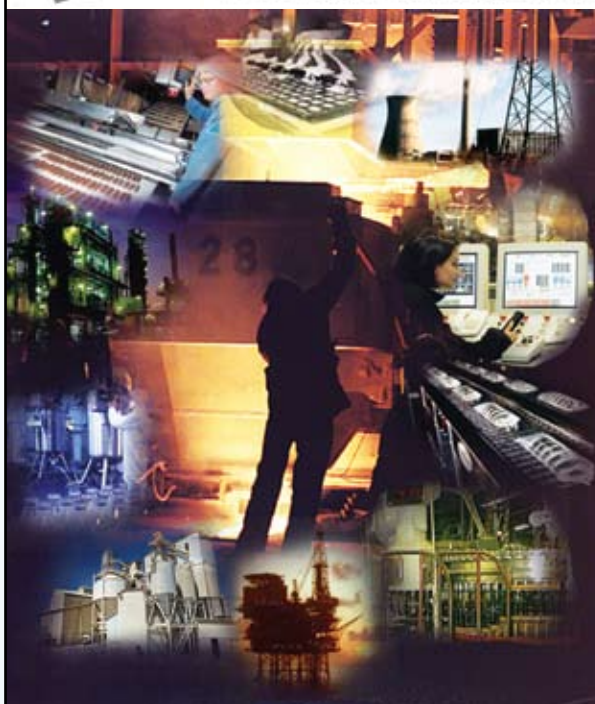


### Life Members

- Malcolm Brinkworth •
- Tony Brinkworth •
- Bernard Zavishlock • Nick Leek •
- Arthur Fryer • Shirley Cole • Jean Fryer •
- Kath Symons, Ken Williams • Peter Holder •



**BAYTEK**  
Information and Control



### BAYTEK SYSTEMS LTD

Industrial Automation Control Engineers

- PLC Programming •
- SCADA Design and Development •
- Industrial Fibre Optic Networks •
- Control Panel Design and Build •
- Lean Manufacturing and OEE Applications •

The Innovation Centre • Festival Drive • Ebbw Vale • NP23 8XA  
T: 01495 356738 • F: 01495 356739 • E: [info@baytek.co.uk](mailto:info@baytek.co.uk)

*Nick Lane*

### Bricklaying and Building Contractor Ltd

Sunnybank  
Twyn Allws Rd • Govilon  
Monmouthshire • NP7 9RT

Tel & Fax: **01873 832151**  
Mobile: **07976 539979**  
Email: [nick.lane@lineone.net](mailto:nick.lane@lineone.net)



- New Build - Extensions -
- Driveways/Patios/Walls -
- Barn/Garage/Loft Conversions -

**QUALITY WORKMANSHIP  
& RELIABILITY**

FAMILY BUTCHERS  
**RAWLINGS**

19 MARKET STREET  
ABERGAVENTNY, MONMOUTHSHIRE  
TELEPHONE - 01873 856773

ALL WALES CHAMPION  
SAUSAGE MAKER

"THE PLACE FOR SAUSAGES  
- AS SEEN ON TV."

If you wish to be our main sponsor  
next year, then please contact  
**CAROLYN WALLACE**  
(Publicity Officer)  
[Wallace@24hollywell.freeserve.co.uk](mailto:Wallace@24hollywell.freeserve.co.uk)

FORTHCOMING PRODUCTION  
FOUNDED 1911  
JUNIOR SECTION  
presents  
*Beauty and the Beast*  
Borough Theatre, Abergavenny  
Monday 15th - Saturday 20th November 2010

**Ken and Ruth**  
are proud to present

**VENUE**  
fifty nine

The new place in town to enjoy food  
served with flair & fine wines in a stylish  
relaxed atmosphere

- Lounge • Pre-Theatre Dining
- High quality accommodation

59 Cross St, Abergavenny 01873 853575  
Best wishes to Abergavenny Panto Co!

FORTHCOMING PRODUCTION  
FOUNDED 1911  
presents  
**Fiddler of the Roof**  
Based on Sholem Aleichem stories by special permission of Arnold Perl  
Book by Joseph Stein • Music by Jerry Bock  
Lyrics by Sheldon Harnick • Produced on the New York Stage by Harold Price  
By arrangement with Josef Weinberger Ltd.  
on behalf of Music Theatre International of New York  
Borough Theatre, Abergavenny  
Mon 19th - Sat 24th April 2010

F. L. WANGLER  
CONTACT LENS  
OPTOMETRISTS  
PRACTITIONERS  
- JO PARRY -

BRYNMAWR PRACTIC NOW OPEN AT:  
16 BEAUFORT STREET, BRYNMAWR TEL: 01495 311555

PRACTICES ALSO AT: NEWPORT, NEWBRIDGE & ABERTILLERY  
*Professional Eyecare for the Whole Family*

LARGE RANGE OF  
DESIGNER FRAMES  
AVAILABLE

CONTACT LENSES TO  
SUIT EVERYBODY'S  
REQUIREMENTS

**Celtic** Computer Systems

- Hardware - Software - Upgrades -
- Repairs - Maintenance - Books -
- New & Recon Complete Systems -

**Telephone 01873 858111**

Email: [celticcomputers@uwclub.net](mailto:celticcomputers@uwclub.net)

## Dorrell Oliver Ltd

Chartered accountants

Linden House, Monk Street, Abergavenny, Monmouthshire  
Tel: (01873) 852113 Fax: (01873) 858523 [www.dorrells.co.uk](http://www.dorrells.co.uk)

ADVICE FOR:

- TAX • NEW BUSINESSES • ACCOUNTANCY •



# A.P.C. Panto Coach Trip

On Sunday 10<sup>th</sup> January a group of 54 (APC members and their families) went to see a professional pantomime at the New Theatre Cardiff, organised by Panto Secretary, Geraint Webb.



## TRIP TO CARDIFF TO SEE JOHN BARROWMAN IN ROBIN HOOD

It's Saturday the 9th of January at 10:30pm, members of the Company have their eyes glued on the latest weather forecast. As the UK faces its coldest winter in thirty years and with heavy snow forecasted over much of Wales, there is a strong possibility that the Pantomime Coach Trip will have to be cancelled.

After a sleepless night, its 9am in the morning and it's snowing once again. Many Parents phone to ask whether the trip is still going ahead. With extensive discussion between members over the heavy snow, a final decision is made that the trip is going ahead this afternoon as planned. Members of the Company assemble at 3:15pm at the Abergavenny Bus Station and aboard the 70 seater, bright yellow MCC Coach. As the snow eases slightly, followed by a biting wind from the north the coach arrives safely at the New Theatre, Cardiff.



As the audience flock in to the 1,570 capacity auditorium, in a flash the irrepressible John Barrowman appears through a trap door onto the stage (a bit of Torchwood eye candy for the gleeful mums). Our group and also our very own Musical Director, Jaci starts shouting and whistling. From the opening number, stunning scenery and dynamic staging transport us to Sherwood Forest. Packed full of local jokes and contemporary references (even slipping in an up-to-the-minute Tiger Woods gag), there was much to amuse everyone. There were ice skating, a Camelot spoof as well the usual panto fun and games. It starred an obvious baddie in the shape of the Sheriff of Nottingham played by Pete Gallagher and the panto dame, alias Friar Tuck, was superbly played by Don Maclean (remember Crackerjack?)

As the curtains close we head back to Abergavenny. Our Treasurer, Pete breathes a sigh of relief as the panto coach trip is a financial success. The Panto trip has inspired everyone in the cast to pull out all the stops to perform 'Treasure Island' a great pantomime in February. Oh yes we will.

## WHY NOT CONSIDER JOINING US?



If you have enjoyed this production of 'Treasure Island' - why not consider joining us for future shows?

We will have a new Pantomime for 2011. Although getting children involved on stage is the cornerstone of the Companies aims - we would welcome more adults - you will also have seen in this programme the long list of those who help us behind the scenes who are needed to stage a production of this size.

**WE MEET EVERY THURSDAY IN THE CORN EXCHANGE AT 7PM BETWEEN SEPTEMBER TO FEBRUARY.**

If you are interested and would like further details then please log on to our website: [www.abergavennypantomime.co.uk](http://www.abergavennypantomime.co.uk) or contact our Membership Secretary

**Mr Jon Newsam - 25 Union Road, Abergavenny, Monmouthshire. NP7 5UL**



Enjoyed the Show?

Then don't forget to take home your piece of Pantomime Magic! Available in the foyer of this theatre now!

# Treasure Island



At the Inn, is an absent guest, a victim of the "Black Spot" or something to do with the sighting of an ugly one-legged pirate? Heaving chests, a secret map, beards, and a seafaring yarn make up this traditional pantomime for all the family. Bring the family along for some half term 'Yo Ho Ho'.



## Chairman's Address



This is the first time for the company to perform Treasure Island, slightly different to the original by Robert Louis Stevenson but with many of the characters including Long John Silver, complete with one leg or should that be incomplete, anyway see if you can spot the leg.

Our producer this year is the capable Stephen (Snowy) Clark and the Musical Director and choreographer is his equally capable wife Jaci Brickley-Clark, what a dynamic duo.

We understand the financial pressures on families in these times of the credit crunch and other financial ills and we have managed to keep our ticket prices at a minimum, they remain the same

as the previous four years. Hopefully any profits will once again be donated to local charities.

My job as chairman is the easy one, all the hard work is done by the officers of the committee, the Treasurer, Secretary, Membership secretary, Publicity officer and Entertainment secretary all put in a tremendous effort to keep the company's wheels turning, a big thank you to them all.

Finally may I thank you for coming out on a cold and probably wet winter's night to support us (still it makes a change from reality TV). We hope you enjoyed the show and have a safe journey home. And watch out for THE BLACK SPOT this is where councils have been turning off the lights.

*Ken Jones* (Chairman)

## Synopsis of Scenes

### ACT ONE

Scene 1 ..... The Admiral Benbow Inn  
Scene 2 ..... The Pirates' Cave  
Scene 3 ..... The Admiral Benbow Inn  
After Closing Time  
Scene 4 ..... The Quayside  
Scene 5 ..... Aboard The Hipspaniola

### ACT TWO

Scene 1 ..... Aboard The Hipspaniola  
Scene 2 ..... Under the Sea  
Scene 3 ..... Treasure Island Beach  
Scene 4 ..... The Haunted Caverns  
Scene 5 ..... Treasure Island Beach  
Scene 6 ..... 'Strictly Come Dancing'  
Scene 7 ..... Cruise's Cabaret Finale

## Musical Numbers

### ACT ONE

1 ..... Omm Pah Pah  
2 ..... Money, Money, Money  
3 ..... What About Now  
4 ..... All in this Together  
5 ..... Yo Ho, Yo Ho  
6 ..... Got the Sun in the Morning  
7 ..... Flash Bang Wallop  
8 ..... Polly the Parrot  
9 ..... Reach

### ACT TWO

1 ..... Hornpipe  
2 ..... Anything You Can Do  
3 ..... A Moment Like This  
4 ..... Under the Sea  
5 ..... Mambo No. 5  
6 ..... Get Here  
7 ..... Oh Boy  
8 ..... Shine  
9 ..... Shout

## Charities

*It has always been the company's policy to donate any profit made to local charities. The charities that APC are supporting this year are:*

- **Bridge to Cross Charitable Trust Abergavenny** (who assist meet young people on the streets by way of a bus ministry to enable those in distress from substance misuse). **DONATION OF £100.**
- **South Downs Trailwalker** (A major annual walk with the donations raised being split between Gurhka Welfare Trust and Oxfam).
- **Riding for the Disabled**





## The Story of Treasure Island

This well known adventure story of Treasure Island was written by Robert Louis Stevenson in 1881. Jim Hawkins lives with his parents in an Inn called 'The Admiral Benbow'. There he finds a treasure map in the belongings of a stranger called Billy Bones who dies mysteriously at the Inn after being given the 'black spot' by another pirate. Jim with Squire Trelawney and Doctor Livesey go in search for its buried treasure which once belonged to the evil pirate Captain Flint. The squire buys a ship called the 'Hispaniola' which has a one legged cook called Long John Silver. Unfortunately, the crew led by Long John Silver are pirates and plan to kill Jim and his friends because they want the treasure. Jim and some of the crew go into hiding on the island where Jim meets Ben Gunn an ex-pirate. After a fight Jim and his map are captured by Long John Silver and they begin to hunt for the treasure. In the end they discover that the treasure had already been found by Benn Gunn some years ago and he leads them to it in his cave. Long John Silver and his crew are defeated and Jim and his friends live happily ever after.



## Joke Section

What do pirates wear in the winter ?

*Long Johns!*

\*\*\*\*\*

Why did the pirate cross the road?

*To get to the second hand shop!*

\*\*\*\*\*

What's a pirate's favorite part of a song?

*The Hook!*

\*\*\*\*\*

Knock knock

Who's there?

*Jethro*

*Jethro who?*

*Jethro the boat and stop talking so much!*

\*\*\*\*\*

Knock Knock

Who's there?

*Arthur*

*Arthur who?*

*Arthur any more biscuits in the tin?*

## Production Credits

### The Band

Musical Director ..... Jaci Brickley-Clark  
Piano Accompanist ..... Jaci Brickley-Clark  
Percussion ..... Dave Purkiss  
Guitars ..... Jason Ball  
Keyboard/Saxophone ..... Sarah Fowler

### Production Team

Producer ..... Stephen Clark  
Musical Director ..... Jaci Brickley-Clark  
Choreographer ..... Jaci Brickley-Clark  
Wardrobe Mistress ..... Linda Butcher  
Publicity Co-ordinator ..... Carolyn Wallace

### Behind the Scenes

Stage Manager ..... Giles Matthews  
Assistant Stage Manager..... Rob Poynter  
Pantomime Co-ordinator..... Geraint Webb  
Technical Manager..... Ioan Wynne  
Stage Technician .....Andrew Jones  
Sound Engineer .....Nathan Long  
Lighting Designer..... Ioan Wynne  
Lighting Operators.....Andrew Jones, Andy Jones  
Follow Spot Operators...Mike Rumsey, Amy Lewis  
Stage Crew .....Phil Butcher, Steve Cantel,  
Eddie Pugh, Rob Poynter,  
Christian Vater, Andrew Jones  
Caller ..... Graham Webb  
Prompter ..... Jane Griffiths  
Props ..... Linda Garrett  
Wardrobe Assistant..... Tracy Pugh  
Merchandise Shop.....Mair Webb &  
Lynette Hayward  
Back Stage Refreshments.....Mair Webb &  
Dawn Staphnill  
Chorus Mistress..... Theresa Richards

### Officers

President ..... Ken Watkins  
Chairman ..... Ken Jones  
Vice Chairman ..... Carolyn Wallace  
Secretary ..... Geraint Webb  
Membership Secretary ..... Jon Newsam  
Treasurer ..... Peter Holder  
Press Secretary ..... Carolyn Wallace  
Social Secretary .....Andrea Marfell &  
Vicky Tyler  
Website Co-ordinator ..... Geraint Webb  
Child Protection Officers ..... Ken Jones &  
Jaci Brickley-Clark  
Committee Members ..... Len Lane,  
Linda Butcher, Ruth Watkins,  
Jaci Brickley-Clark,  
Lisa Powell, Vicky Tyler  
Junior Committee Representatives.....  
Kieran Butcher &  
Molly Brickley-Clark



## Production Acknowledgements

Sponsored by



**Treasure Island Show Merchandise**

Show Souvenirs & MCM Limelight

**DVD Filming & Editing - Mallsion Media**

**Treasure Island Script Published by NODA**

**Scenery**

Owen Money Theatre Company & Scene Change

**Costumes - Footlights**

**Sound Equipment - T & M Technical Services**

**Pomegranate and KK Design**

Production of street banners

## Thank You

**TO OUR SPONSORS AND ADVERTISERS ESPECIALLY**

- Baytek
- Borough Theatre Management & Front of House Team
- Ladies & Gentlemen of the Press
- Window Dressers & all those who displayed posters
- Red Cross
- Gwyn Williams for designing & making additional props
- John Bannon for flying the Street Banner
- Nigel Clark for Poster and Programme Design
- Geraint Webb for Publicity & Cast Photographs
- Merchandise, Raffle & Programme Sellers
- All Programme Advertisers & Sponsors
- Parents of the Chorus
- Sylvatica Web Design

Our audience, whose continued support  
this week has made it worthwhile

**Please forgive us if we have forgotten anyone**



# Puzzle Page

## Word Puzzle

- BEARD SELLER ☐
- BRASS ☐
- CAPTAIN ☐
- FELICITY ☐
- GOOD FAIRY ☐
- JIM ☐
- KNUCKLES ☐
- LONG JOHN SILVER ☐
- MA HAWKINS ☐
- POLLY PARROT ☐
- ROBINSON CRUSOE ☐
- SQUIRE TRELAWNEY ☐

M	A	H	A	W	K	I	N	S	Q	F	N	E	R	S	V	F
R	I	E	G	H	N	S	N	S	S	A	R	B	P	L	E	E
E	W	J	U	T	U	A	B	Z	N	R	O	X	C	F	J	L
V	H	F	T	Y	C	F	E	I	O	D	B	L	O	S	C	I
L	E	V	G	H	K	E	A	A	D	N	I	A	T	P	A	C
I	Y	H	J	K	L	O	R	R	G	H	N	Z	C	B	J	I
S	D	G	R	G	E	B	D	K	S	S	S	E	R	F	B	T
N	W	O	Q	P	S	U	S	Y	K	J	O	D	D	S	A	Y
H	E	O	S	H	R	K	E	D	S	S	N	L	F	C	E	Y
O	U	D	D	X	B	D	L	C	F	V	C	Y	G	J	F	H
J	Y	F	H	P	O	L	L	Y	P	A	R	R	O	T	H	S
G	I	A	J	V	H	L	E	Z	K	Y	U	D	K	I	K	V
N	N	I	L	J	S	G	R	U	D	J	S	V	D	O	Y	K
O	C	R	U	J	U	D	Q	N	E	S	O	N	U	L	R	Y
L	X	Y	E	N	W	A	L	E	R	T	E	R	I	U	Q	S

See if you can find all the words from the list in this word search. They may go backwards, forwards, up and down or diagonally. Each letter may be used in different words.

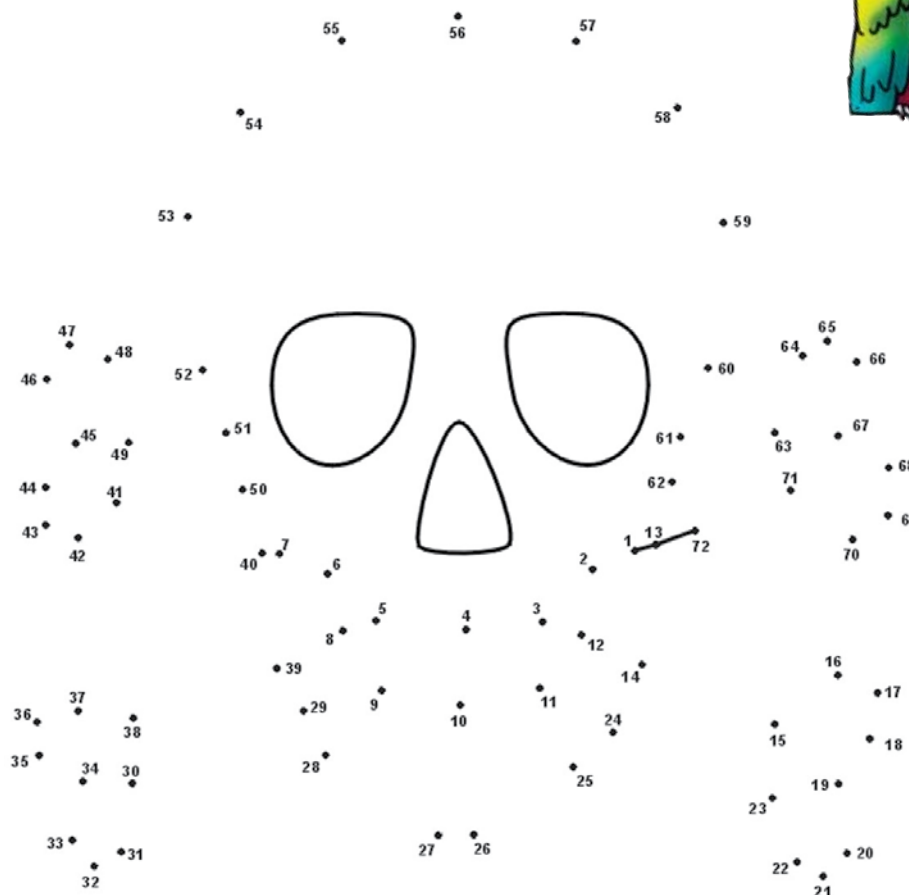


## Word Quiz

Unscramble the following words below from the story of Treasure Island. The first word has been already been unscrambled for you.

- RTAIE Pirate
- NACPITA .....
- APROTR .....
- SCUREO .....
- KSWHIAN .....
- PMA .....
- QRUIES .....
- RWDOS .....
- REAETSRU .....
- SAILDN .....

## Join the Dots



Join the dots up to reveal the face on Long John Silver's flag!

# Cast Notes

## • ZACH CLEE • ROBINSON CRUSOE

Ahoy ship mates; it's me "Crusoe...Robinson Crusoe" (Or "Clee...Zach Clee"). I'm 14 years old and it's my first year in panto. I play the part of a man who has been trapped on an island with a bunch of women (Who would ever want that?). So I want you to boo the bad guys and cheer for the good guys (ME). So just sing along and have fun.

## • STEPHEN CLARK • BRASS / PRODUCER

Hi there, it's nice once again to appear in this year's pantomime. I would like to thank everyone who has worked hard to bring so much life into this year's show, also thank you for coming to support us.

## • PETER HOLDER • SQUIRE TRELAWNEY

This show has me playing the aristocratic father of the principal girl with an unhealthy (or healthy?) interest in dumplings and cheesy nibbles. Gordon Ramsay eat your heart out! Enjoy the show!

## • KEN JONES • MA HAWKINS

First time for me to do Treasure Island, its got Pirates, Parrots, Black Spots and that's just on my tights!

## • LEN LANE • LONG JOHN SILVER

Hi kids, mums and dads. My name is Len. I play the part of Long John Silver. I will be looking out for some potential pirates in the audience. I hope you enjoy the show. Don't forget to cheer when you see me and my gang. If you don't, it will be the black spot for the lot of you swabs!

## • AIMEE MOGFORD • JIM HAWKINS

Hey I'm Aimee!! Playing the part of a boy....again! I think they're trying to tell me something! Ha! Hope you enjoy the show guys!

**PLEASE NOTE:** Smoking is not permitted anywhere inside this theatre. The use of cameras, with or without flashlights, and tape and video recorders is not permitted. Please also ensure your mobile phone is switched off during the performance.

**WARNING:** Pyrotechnics will be used during this performance.

## • JANE GILBERT • GOOD FAIRY

I've got my wand at the ready and magic fairy dust in large supply to make sure this years pantomime goes off without a hitch...mostly. Last year I was the evil Witch Hazel. This time I promise to behave myself, but with a parrot like Polly to contend with, I hope I'm not the one tearing my feathers out. Enjoy the show!

## • MOLLY BRICKLEY-CLARK • POLLY THE PARROT

Hi, I'm Molly. I'm 12 and go to Monouth Comprehensive School. I'm playing the moody parrot Polly - she's not like me at all - honest!!! I have been in panto for 9 years now, I joined when I was 3 as an apprentice fairy and appeared right at the end to say "1,2,3, go"!! I'm very proud to be in the panto with my Dad, Stephen and Mum, Jaci, and want you all to have a great time!! Hope you all go home doing the parrot walk!

## • CHELSEA VIVEASH • FELICITY

Hey everyone! Im Chelsea, Im 19 and will be playing the part of Felicity this year! Hope you all enjoy the show and eat lots of ice cream! :) aha. Boo loud but cheer even louder, and of course join in with the singing! :) x

## • EMMA DAVIES • BEARD SELLER

Hi everybody! Look out for me selling beards all in the wrong colours! This is my fifth year in Panto now and I love entertaining the audience and performing, it's my dream! Hope you all enjoy the show and keep supporting us! Love Emz Xx

## • ANDREW FOWLER • KNUCKLES

Ahoy Mateys! I am Andrew and I'm playing Knuckles. Its my first year in panto, hope you all enjoy it! Off to get my sea legs, Bye!

## • HONEY MCKENNA • MARTHA

Alright darlin'? My name is Honey, and I'm in lower 6th. This is my 6th pantomime and it's great fun every time! I love performing arts - especially singing! I'm playing Martha the barmaid, so get your drinks in and enjoy the show! (But don't drink and drive. Or drink too much. It's a family show.).





ZACH CLEE  
• ROBINSON CRUSOE •



MOLLY BRICKLEY-CLARK  
• POLLY PARROT •



AIMEE MOGFORD  
• JIM HAWKINS •



LEN LANE  
• LONG JOHN SILVER •



PETER HOLDER  
• SQUIRE TRELAWNEY •



JANE GILBERT  
• GOOD FAIRY •



ANDREW FOWLER  
• KNUCKLES •



CHELSEA VIVEASH  
• FELICITY •



EMMA DAVIES  
• BEARD SELLER •



HONEY MCKENNA  
• MARTHA •



ALEX CLARKE  
• PIRATE •



MILES HARDING  
• PIRATE •



KIERAN BUTCHER  
• PIRATE •



JOSEPH PUGH  
• PIRATE •



KYLE PLUMMER  
• PIRATE •



MICHAEL PEACOCK  
• PIRATE •



HUW MARFELL  
• PIRATE •



KYLE BUTCHER  
• PIRATE •



MARCUS HUGHES  
• PIRATE •



JON NEWSOM  
• PIRATE •



FREYA PLANT, EMMA POWELL  
• CHORUS •



LAURA CHICKEN  
• CHORUS •



KELLY WHISTANCE  
• CHORUS •



CARYS DAVIES  
• CHORUS •



VICKY TYLER  
• CHORUS •



MEGAN TRINDER  
• CHORUS •



NIA HOLDER  
• CHORUS •



CARA NEWSOM, ELENOR NEWSOM  
• CHORUS •



ALISHA SKINNER  
• CHORUS •



ELLA WALSH  
• CHORUS •



ALYS PUGH  
• CHORUS •



LAURA BARRETT  
• CHORUS •



EMILY PARKER  
• CHORUS •



NIA WILLIAMS  
• CHORUS •



LAUREN JONES  
• CHORUS •



MEG MOSSEMENEAR  
• CHORUS •



ABIGAIL JONES  
• CHORUS •



KEN JAMES  
• MA HAWKINS •



ANDREA MARFELL  
• CAPTAIN CORKER'UN •



KEN WATKINS, PHIL BUTCHER  
• MERMAIDS •



GERAINT WEBB  
• PIRATE/PANTO SEC •



CAROLYN WALLACE  
• PUBLICITY CO-ORDINATOR •



JANE GRIFFITHS  
• PROMPTER / MAKE-UP •



IOAN WYNNE  
• TECHNICAL MANAGER •



JACI BRICKLEY-CLARK  
• CHOREOGRAPHER / MUSICAL DIRECTOR •



STEPHEN CLARK  
• BRASS/PRODUCER •

