

aladdin

Written by Stephen Clark

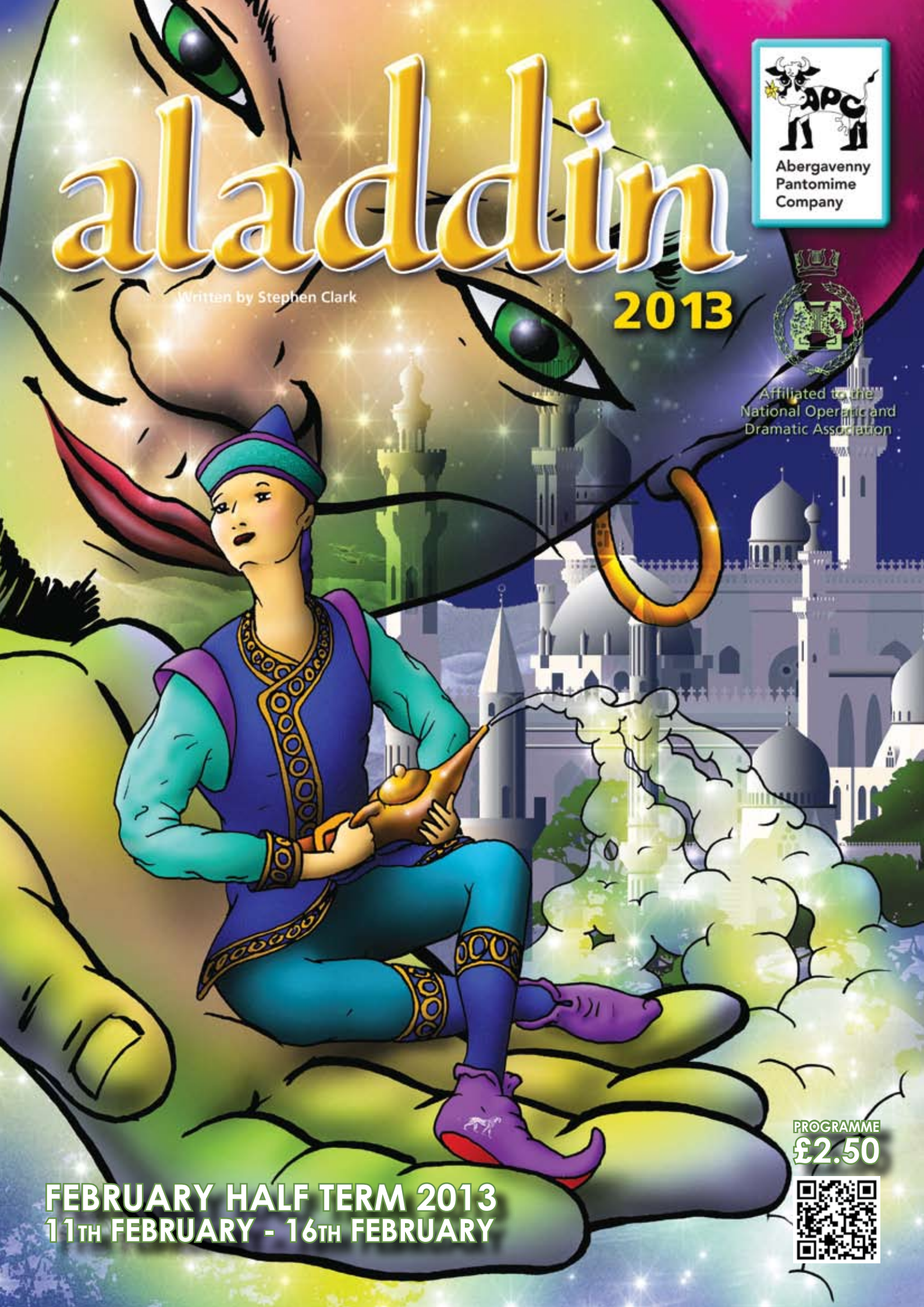
2013



Abergavenny
Pantomime
Company



Affiliated to the
National Operatic and
Dramatic Association



FEBRUARY HALF TERM 2013
11TH FEBRUARY - 16TH FEBRUARY

PROGRAMME
£2.50



Thank You

- Borough Theatre Management & Front of House Team
- Ladies & Gentlemen of the Press
- Ruth & Ken Watkins at Venue 59
- Window Dressers & all those who displayed posters
- Red Cross
- Derek Wallace for designing & making additional props
- Sian Williams and Derek Wallace for their expertise and making the new Panto Cow
- Nigel Clark for Poster and Programme Design
- Geraint Webb for Publicity & Cast Photographs
- Merchandise, Raffle & Programme Sellers
- All Programme Advertisers & Sponsors
- Parents of the Chorus
- Sylvatica Web Design
- Our audience, whose continued support this week has made it worthwhile

Please forgive us if we have forgotten anyone

SPACE FREE

Take home your piece of Pantomime Magic! Available in the foyer of this theatre now!



Flashing Gloves
Jasmine Paper
Fans
Flashing Foam
Baton



flashin
gloves

**Waiting for
more to come**





Aladdin

Dust down the magic carpet, we're off on a half-term trip to meet Aladdin, Widow Twanky, Wishy-Washy and the evil, cunning Abanazar in this traditional fun-filled family pantomime.

Chairman's Address



Another year another pantomime, how time has flown - we are flying again in this Pantomime not like last year as Peter Pan did out of the window, but on a magic carpet to the orient. Our Producer and writer Stephen (Snowy) Clark has again put his own interpretation on an old favourite, Aladdin, a show which has something for everyone. Set in old China several hundred years ago (which is probably before many of the cast were born) it is colourful and traditional.

Our Pantomime cast this year is possibly the youngest we have had and with Peter Holder, myself and Snowy brings the average age to at least 50 years.

As ever, there has been a turnover of some of our younger members who seem to grow up so quickly and move onto their future adult lives and careers. It is very interesting (in another part of the programme) to see what has become of some of our past youngsters.

The proceeds of our Pantomime as always go to charitable organisations in the area so may I thank you for supporting us and therefore giving support to these local organisations.

Enjoy the show and have a safe journey home.

Ken Jones

Synopsis of Scenes

ACT ONE

- 1 Prologue
- 2 Market Place in Old Peking
- 3 The Forest Glade
- 4 Outside the Cave

ACT TWO

- 1 Inside the Magic Cave
- 2 Outside Widow Twanky's Laundry
- 3 Inside Widow Twanky's Laundry
- 4 Outside the Emperor's Palace
- 5 Back Inside Widow Twanky's Laundry
- 6 House Song
- 7 The Grand Finale

CAST

(in order of appearance)

Narrator	Joe Pugh
Widow Twanky	Ken Jones
Aladdin	Molly Brickley-Clark
Wishy Washy	Stephen Clark
Dunn Poo Cow (Front)	Jon Newsam
Dunn Poo Cow (Back)	Huw Marfell
Chow Mein	Megan Trinder
Chop Suey	Louise Morgan
Abanazar	Alex Williams
Do-Pe	Eleanor Newsam
Wee-Wee	Nia Gandhi
Princess Jasmine	Chelsea Viveash
Slave of the Ring	Emma Davies
Genie	Zach Clee
Hard Lee	Geraint Webb
Emperor Ah Chu	Peter Holder
Empress Ah Chu Tu	Andrea Marfell
High Executioner	Annie Rees
Little Abanazar	Zac Williams

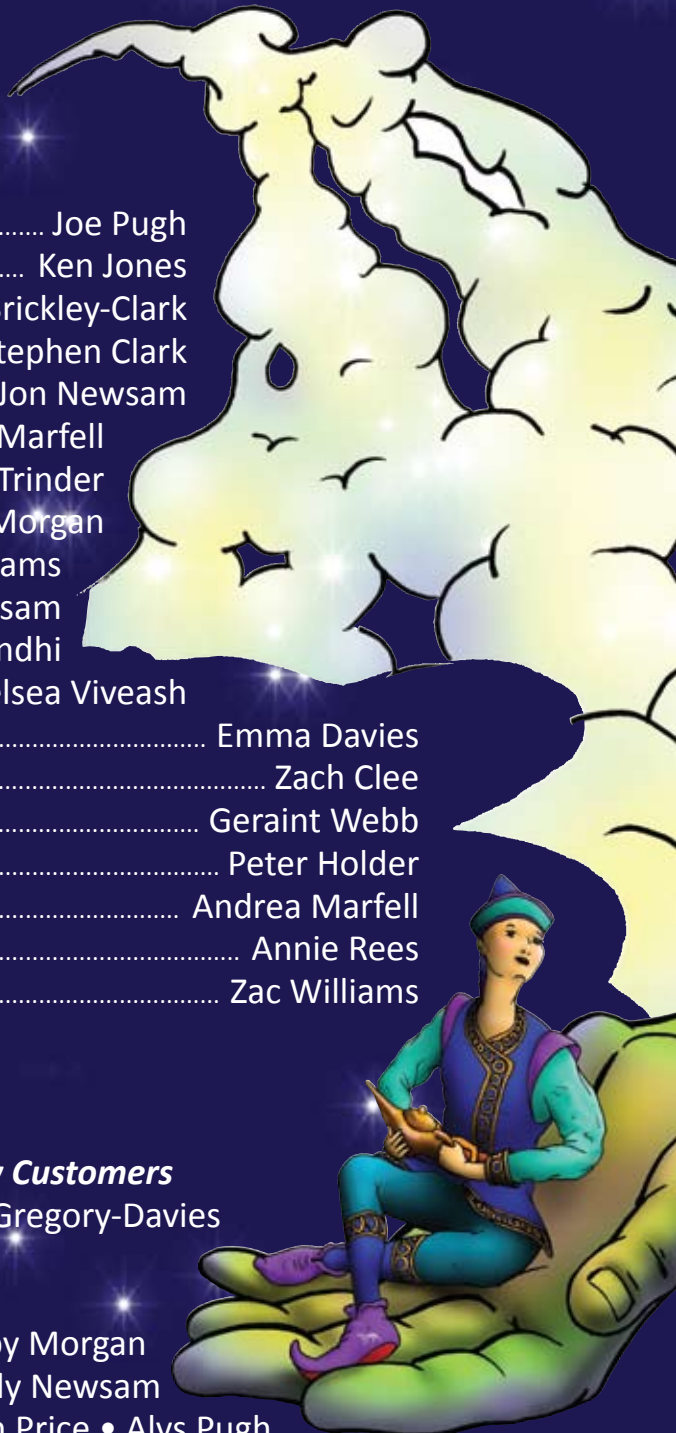
Junior Chorus

Citizens of Peking, Spiders, Palace Servants, Laundry Customers

Kieran Butcher • Laura Barrett • Celyn Davies • Sam Gregory-Davies
 Niamh Davies • Hiranya Griffiths • Charlotte Griffiths
 Miles Harding • Nia Holder • Brandon Jones
 Maria Kirkham-Jones • Alice Lang • Leah Lewis • Libby Morgan
 Leah McCann • Eleanor Newsam • Cara Newsam • Lily Newsam
 Olivia Parkin • Elena Peacock • Emma Powell • Caitlin Price • Alys Pugh
 Katie Rands • Abbie Rands • Annie Rees • Ella Richards • Arianna Scarpetta
 Maisie Stott • Emeliia Stott • Richard Wride • Catrin Williams • Zac Williams

Ensemble / Adult Chorus

Vicky Tyler • Emma Gould • Kyle Plummer • Joe Haywood • Keane Davies





Spider Dancers



Bhangra Dancers

Aladdin Chorus



Production Team

The Band

Musical Director Jaci Brickley-Clark
Piano Accompanist ... Jaci Brickley-Clark
Drums/Percussion Dave Purkiss
Bass Guitar Jason Ball

Production Team

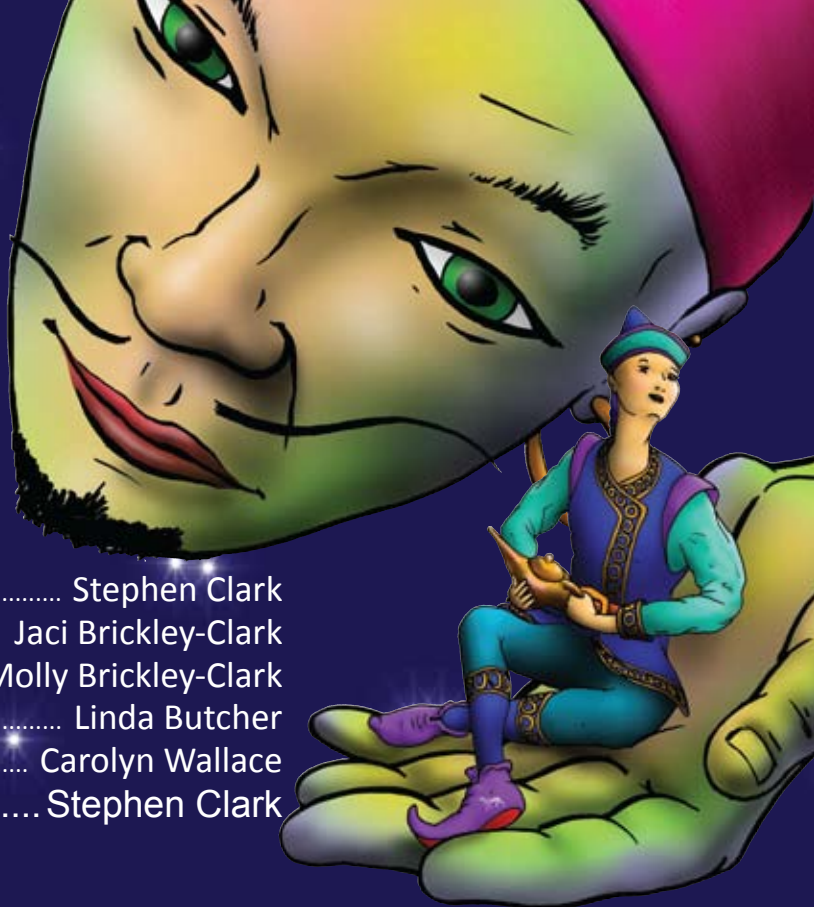
Producer Stephen Clark
Musical Director Jaci Brickley-Clark
Choreographers Jaci Brickley-Clark & Molly Brickley-Clark
Wardrobe Mistress Linda Butcher
Publicity Co-ordinator Carolyn Wallace
Script Writer Stephen Clark

Behind the Scenes

Stage Manager Andrew Fowler
Assistant Stage Manager Rob Poynter
Technical Manager Ioan Wynne
Lighting Designer Ioan Wynne
Lighting Operator Andrew Jones
Sound Engineer Nathan Long
Follow Spots Mike Rumsey & Amy Lewis
Backstage Crew Phil Butcher, Steve Cantel, Rob Poynter,
John Vater, Christian Vater, Ed Pugh
Props Linda Garrett
Caller Graham Webb
Prompter Jane Griffiths
Merchandise & Backstage Shop Mair Webb, Lynette Hayward & Dawn Staphnill
Programme Content Carolyn Wallace & Geraint Webb
Back Stage Refreshments Mary Davies & Gail Harding
Stage Technician Andrew Jones
Chorus Mistress Theresa Richards
Make-up Jane Griffiths
Assistant Wardrobe Tracey Pugh

Production Acknowledgements

Aladdin Show Merchandise Show Souvenirs & MCM Limelight
Scenery Scenery Hire Ltd
Magic Carpet Scenery Hire Ltd
Costumes Footlights
Sound Equipment T & M Technical Services
Street Banners Pomegranate



Puzzle Page

Word Puzzle

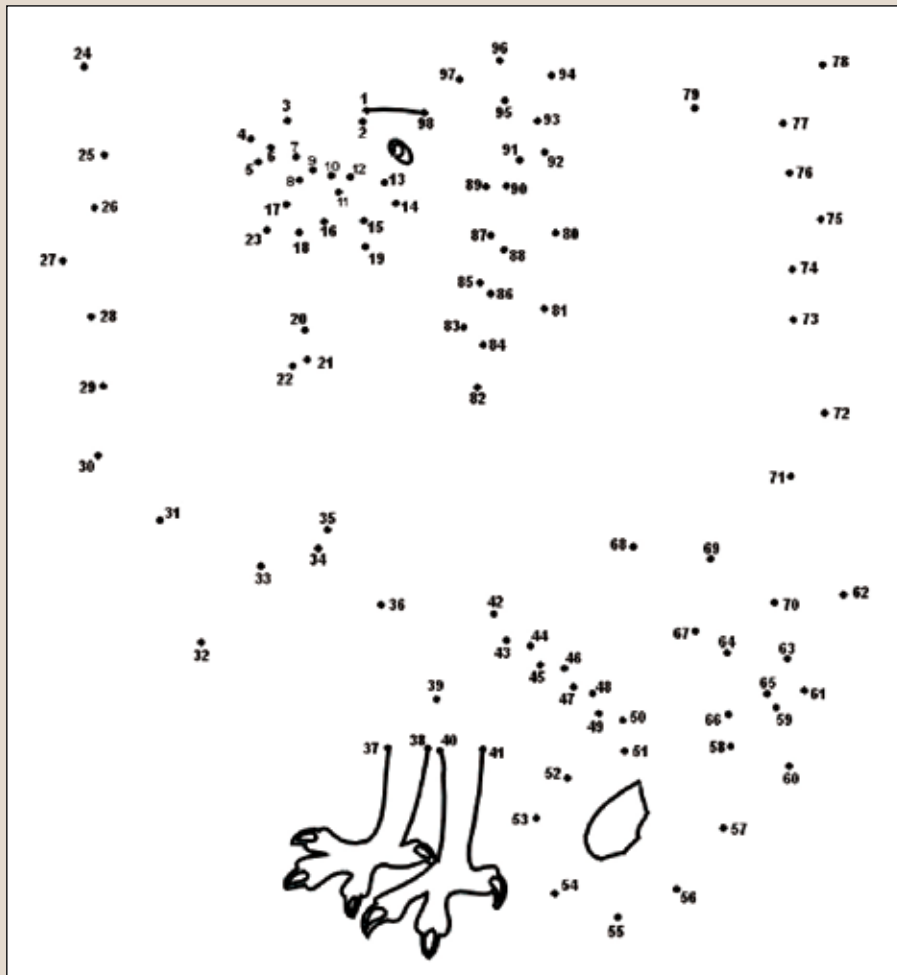
- ABANANZAR ☐
- ALADDIN ☐
- CHOP SUEY ☐
- CHOW MEIN ☐
- DO PE ☐
- EMPEROR ☐
- EMPRESS ☐
- GENIE ☐
- HARD LEE ☐
- JASMINE ☐
- NARRATOR ☐
- SLAVE ☐
- WEE WEE ☐
- WIDOW TWANKY ☐
- WISHY WASHY ☐

A	B	A	N	A	N	Z	A	R	O	A	J	I	P	E	A	J
D	A	W	B	R	X	O	E	I	Q	U	E	Q	W	M	T	A
U	V	I	E	H	A	R	D	L	E	E	W	J	I	P	O	S
N	O	S	J	W	C	I	V	A	W	H	Z	E	A	E	C	M
A	Y	H	Q	E	O	V	H	E	C	B	I	H	O	R	N	I
R	I	Y	D	W	L	T	E	D	E	Q	U	D	X	O	S	N
R	T	W	I	D	O	W	T	W	A	N	K	Y	H	R	I	E
A	S	A	S	N	J	Y	P	R	U	A	O	R	M	Y	K	C
T	G	S	U	A	L	A	D	D	I	N	F	T	E	F	B	G
O	Z	H	E	K	P	I	J	N	L	Y	N	U	L	V	L	E
R	T	Y	G	A	C	D	M	H	F	E	S	I	N	O	R	N
B	M	R	Z	L	Y	S	D	Q	K	P	F	G	K	M	C	I
E	M	P	R	E	S	S	O	F	O	U	C	S	L	A	V	E
Z	U	M	A	E	X	G	L	H	U	K	B	P	M	U	D	P
N	I	E	M	W	O	H	C	W	G	S	E	X	E	P	O	D

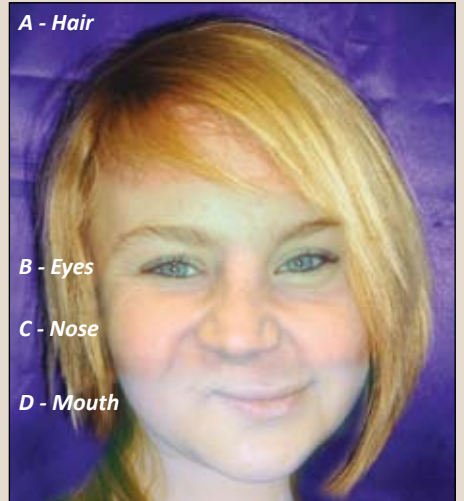
See if you can find all the words from the list in this word search. They may go backwards, forwards, up and down or diagonally. Each letter may be used in different words.

Join the Dots

Uh-oh! That wicked Abanazar has changed himself into something terrible! Join the dots to find out what he has turned himself into.



Guess the Cast Members



A - Hair

B - Eyes

C - Nose

D - Mouth

a c

b d

Guess the Cast Member Answers
A-Jane Gilbert B-Molly Brickle-Clark C-Andrea Martell D-ChelseaVivresh

Website

Over recent months the Company has been revamping and updating the APC website. We are very pleased to announce the launch of our fantastic new website, along with a new look. We have included some new features that we hope will make visiting the site a quicker, easier and more interactive experience. New photos and DVD clips from last year's production of Peter Pan have also been added. We hope you enjoy our new website and we are also now on Twitter, so we would love to hear what you think about our new website.



Abergavenny Pantomime Company

Font size [Bigger](#) [Reset](#) [Smaller](#)

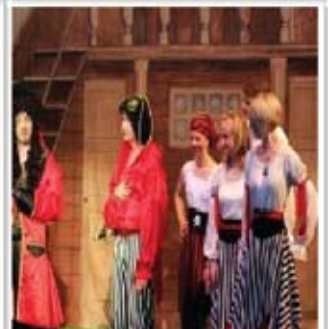
You are here: [Home](#) » [Photo Gallery](#) » Gallery 4: 2010 - present

Main Menu

2012: Peter Pan

- [Home](#)
- [History of Our Company](#)
- [The Early Years](#)
- [History: 1960 - 1989](#)
- [History: 1990 - 1999](#)
- [History: 2000 - 2009](#)
- [History: 2010 - present](#)
- [Our Past Shows](#)
- [Photo Gallery](#)

Click on any thumbnail to see a larger version.



Gallery 1: 1988 - 1994

Gallery 2: 1995 - 1999

Gallery 3: 2000 - 2009

www.abergavennypantomime.co.uk



Aladdin

MOLLY BRICKLEY-CLARK



Princess Jasmine

CHELSEA VIVEASH



Narrator

JOE PUGH



Genie

ZACH CLEE



Wishy Washy

STEPHEN CLARK



Widow Twanky

KEN JONES



Abanazar

ALEX WILLIAMS



Little Abanazar

ZAC WILLIAMS



Wee Wee

NIA GANDHI



Hard Lee

GERAINT WEBB
PANTO SECRETARY

aladdin

Musical

ACT ONE

- 1 - LET'S GET LOUD
- 2 - MR WU'S CHINESE LAUNDRY BLUES
- 3 - I LIKE THE WAY YOU MOOOOO
- 4 - BAD
- 5 - GIRLS JUST WANT TO HAVE FUN
- 6 - I SEE THE LIGHT
- 7 - GOOD VIBRATIONS
- 8 - DON'T STOP ME KNOW

ACT TWO

- 1 - REFLECTION
- 2 - SPIDER DANCE
- 3 - MAKE YOU FEEL MY LOVE
- 4 - YOU'RE A PINK TOOTHBRUSH
- 5 - FLYING WITHOUT WINGS
- 6 - CELEBRATION
- 7 - A FINE ROMANCE
- 8 - BAD GUYS
- 9 - BANGHRA DANCE
- 10 - DANCE WITH ME TONIGHT
- 11 - NEXT TO ME
- 12 - CRAZY LITTLE THING CALLED LOVE

Aladdin

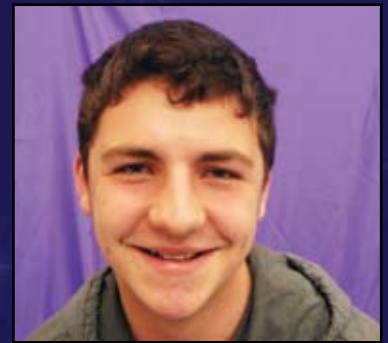
Numbers

..... Chorus
 S..... Widow Twanky
 Dun Poo & Chorus
 Abanazar
 Jasmine, Do Pe & Wee-Wee
 Aladdin & Jasmine
 Chorus
 ... Abanazar, Chow Mein & Chop Suey

 Jasmine
 Spiders
 Aladdin
 Genie and Slave of the Ring
 Aladdin, Jasmine, Geneie,
 Slave, Do Pe & Wee-Wee
 Chorus
 Emperor & Empress
 Chow Mein & Chop Suey
 Aladdin, Do Pe, Wee-Wee,
 Narrator & Bhangra Dancers
 Cast
 Cast
 Cast



Dunn Poo Cow
 JON NEWSAM (FRONT)



Dunn Poo Cow
 HUW MARFELL (BACK)



Chow Mein
 MEGAN TRINDER



Chop Suey
 LOUISE MORGAN



Do-Pe
 ELEANOR NEWSAM



Slave of the Ring
 EMMA DAVIES



Emperor Ah Chu
 PETER HOLDER



Empress Ah Chu Tu
 ANDREA MARFELL



High Executioner
 ANNI REES



Musical Director
 JACI BRICKLEY-CLARK

Our Pantomime Secretary Geraint Webb takes time out to reflect on APC's four legged Panto friend.

Panto Cow Undergoes Botox

Pantomime animals appear in many of the traditional pantomimes. Jack has a cow in Jack and the Beanstalk and Dick Whittington has his famous cat. There are also pantomime horses, geese and dogs. This one tradition still remains a major role in most of our pantomime stories and is a valuable member of our cast. Our Life Members can also recall using real animals on stage such as live frogs and hens treading the boards. However there is always plenty of humour to be found in animals played by human actors wearing animal costumes (known as 'skins'). Over the years many actors have had the opportunity of taking on the role of playing the panto animal in our productions, including myself. Performing in the animal costume can be a hot and uncomfortable business, particularly if you are the back end! The performances can also be physically extremely demanding, with a number of various dance routines to learn and perform. Also taking part in various sketches and performing tricks such as jumping through hoops and doing the splits can be very difficult to achieve.

Over the past fourteen years, every pantomime that we have performed that has featured a cow or a horse on stage, the Company has used the same costume by adding or removing its horns and mane. Over the years our panto tetrapod has performed in over fifty live performances, has been hired out to other local amateur societies, its walked up and down the streets of Abergavenny promoting and publicising our annual production, has featured many times in the Abergavenny Chronicle and has also made its television debut on BBC Wales Today in 2007 as part of our 75th Anniversary Celebrations. It has also had various names such as Shergar, Flash, Strawberry, Daisy, Buttercup.....to name a few!

Therefore in 2011 the APC Committee felt it was time that our four legged friend should undergo a new facelift and it was decided that we would design and make a new panto cow/horse. So, no more reliance on putting on the old tetrapod costume and undertaking its annual panto pilgrimage. To be fair this project just didn't happen overnight; a certain amount of background work had to be gone into planning became a reality. Various fundraising events took place beforehand and last year enough money was raised for our prop designers Derek Wallace and Sian Williams to design and make the new panto Cow/Horse. Our designers felt that a new creation was needed, to be more flamboyant than the last one and decided in this digital age of high technology, that it should feature flashing colour changing electrical eyes, have the accessibility of smoke pouring through its nostrils and of course squirting udders. Using over 20 meters of fabric to make the main body and deciding on the choice of material to ensure the Cow has the glitz and colour that the audience expects can also be a challenge. This attention to detail has been proved the right course of action. So during this performance of Aladdin we will, quite literally, see the fruits of their labours as Dun Poo makes its first ever on stage appearance. (Yes we love the name too, oh yes we do!)

**Photos
to come**



10 INTERESTING FACTS about...

aladdin

1 After 'Cinderella' the pantomime of 'Aladdin' is the second most popular in the country. The story originates in the 'Tales of the Arabian Nights', and in the pantomime version it is set in China.

2 Aladdin was the 31st animated feature in the Walt Disney Animated Classics series and was released in 1992.

3 Aladdin is a tale of good versus evil, fun and magic.

4 The first stage version of Aladdin was seen in London's Covent Garden in 1788.

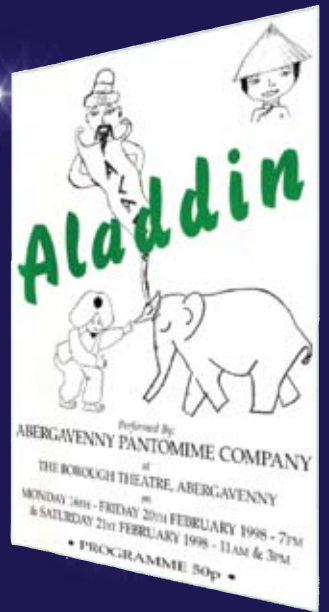
5 "Bring me the lamp, boy! Bring me the lamp!" Abanazar's desperate command, as he stands on the threshold of omnipotence, never fails to send shivers of excitement down the audience's spine.

6 Aladdin is APC's most popular pantomime performed, which has now been staged a total of nine times.

7 The character Widow Twankey was named after a popular brand of Chinese tea.

9 Like the adventures of Sinbad the Sailor and Ali Baba, the story of Aladdin can be found in the famous collection of old Arabian and Eastern tales.

10 Aladdin is one of the most spectacular, often with lavish scenery, a glittering 'Transformation' scene in the cave of jewels, and very often a flying carpet to add to the magic.



8

Company veteran Peter Holder who is playing Emperor Ah Chu has played the role of Abanazar at least four times.

Officers of the Society

President	Ken Watkins
Chairman	Ken Jones
Vice Chairman	Carolyn Wallace
Pantomime Secretary	Geraint Webb
Membership Secretary	Jon Newsam
Treasurer	Peter Holder
Press Secretary	Carolyn Wallace
Social Secretary	Andrea Marfell & Victoria Tyler
Website Coordinators	Andrea Marfell & Geraint Webb
Ticket Secretary	Jane Griffiths
Child Protection Officers	Ken Jones & Jaci Brickley-Clark
Committee Members are ... Linda Butcher, Ruth Watkins, Jaci Brickley-Clark, Gail Harding, Victoria Tyler, Lisa Powell, Jane Gilbert, Derek Wallace, Ed Pugh.	

Life Members

Malcolm Brinkworth • Tony Brinkworth • Arthur Fryer • Jean Fryer • Shirley Cole
Kath Symons • Ken Williams • Peter Holder • Mair Webb • Graham Webb

Charities

One of Abergavenny Pantomime Company's main aims when ever practicable, is to support charitable causes by utilising a proportion of the profits accruing from its annual production. Our choosen charity this year is Motor Neuron Disease.



Obituary to Nick Leek



Sadly we have to report the loss of one of our Life Members, Nicholas Leek. Nick joined APC back in 1987 as our rehearsal Pianist and Musical Director. Nick along with his best mate Ted Hunt (percussionist) were known as the dynamic musical duo and both attended every rehearsal and performed in every production for the next twelve years. Nick also later took on many roles within the Company; he served on the Committee and also took on the position of Secretary for a short period, before having the privilege and honour of becoming Chairman of APC. Despite the pressures of his position he was one of the Company's most relaxed and unflappable Members, who was always willing to stop and listen to others. He gained great satisfaction from helping to teach Members of the Company to sing and perform for each show he was involved in.

Over the years Nick often referred himself as a "player extraordinaire of black notes" and would often comment with some perseverance that he is "learning to play black notes, so things might get better". Towards the end of 1999 Nick stepped down from his position as pianist to concentrate on his role as Chairman for another three years until his full retirement from the Company in 2002. It was therefore decided due to Nick's long term recognition and dedication with APC, the Company awarded his services as a Life Member. He will be sadly missed by us all and he was a true ambassador of APC.

Guess who this is? Its our one and only Pete Holder as Abanazar in Aladdin some many years ago. This one was taken when Pete was a principal in the Abergavenny's Penny-Fal Hospital Pantomime company production in 1977. The panto ran for four days at the hospital. Yes Pete's been in the panto in Abergavenny a long time and taken many parts and performing in many venues. He not only performs with the company these days but undertakes a most valuable role as the company treasurer. Thanks Pete!



Where Are They Now?

To Come

Professional Musicians Providing Professional Tuition

The MUSIC Studio

1-2-1 PROFESSIONAL MUSIC TUITION - ABERGAVENNY

Vocal Performance & Music Theatre
Electric/Acoustic Guitar & Bass
Piano & Keyboards
Saxophone, Clarinet & Flute
Music Theory & Exam Prep

ANY STYLE OF MUSIC
LESSONS AVAILABLE NOW!

07771 906826 07775 911446

JASON BALL SARAH FOWLER

COMMUNICATION FUN ACT
SELF-ESTEEM
DYNAMIC ENTHUSIASTIC
EXPRESSION THEATRICAL
PERFORMANCE
SOCIALISATION
CREATIVITY
PUBLIC SPEAKING
PRESENTATION SKILLS
CONFIDENCE

DRAMA
Ages 4-18 **CLASSES**

Tel: 0845 603 7220 / 02920 462540
swales@helenogrady.co.uk www.helenogrady.co.uk

Marshfield
Langstone
Monmouth
Chepstow
Magor
New Inn
Abergavenny

HELEN O'GRADY
DRAMA ACADEMY

JOIN US FOR A FREE TRIAL LESSON

TED WILLIAMS & SONS

established 1883

FUNERAL DIRECTORS, MONUMENTAL MASONS

An independent family firm providing
a personal service day & night to:

ABERGAVERNNEY & SURROUNDING RURAL AREAS

- PRE-PAID FUNERAL PLANS AVAILABLE •
- DEDICATED CHAPEL AND REST ROOMS •
- LARGE CAR PARK •

at
PARK ROAD FUNERAL HOME, ABERGAVERNNEY

01873 853942 01873 854358

K&J CRAFTS

Unit 16 Inshop
34 The Mall
Cwmbran
Gwent
NP44 1PX
Open 9am to 5.30pm
Monday to Saturday
Closed On Sunday
Tel: 01633 869693
Tel: 01633 872619

For all your Craft & Hobby needs
Haberdashery, & Sewing Accessories
Knitting Yarns & Patterns
Embroidery, Tapestry & Cross Stitch
Fabrics and Fabric Dyes
Cake & Sugarcraft Accessories

Shop On Line
www.caricrafts.co.uk

36A Lion Street
Abergavenny
Monmouthshire
NP7 5NT
Open 9am to 5.00pm
Monday to Saturday
Closed On Sunday
Tel: 01873 268001

HAVE YOU CONSIDERED JOINING US?




If you have enjoyed this production of 'Peter Pan' - why not consider joining us for future shows? We will have a new Pantomime for 2013. Although getting children involved on stage is the cornerstone of the Companies aims - we would welcome more adults - you will also have seen in this programme the long list of those who help us behind the scenes who are needed to stage a production of this size.

**WE MEET EVERY THURSDAY IN
THE CORN EXCHANGE AT 7PM BETWEEN
SEPTEMBER TO FEBRUARY.**

If you are interested and would like further details then please log on to our website:
www.abergavennypantomime.co.uk
or contact our Membership Secretary

**Mr Jon Newsam - 25 Union Road,
Abergavenny, Monmouthshire. NP7 5UL**



noda

Serving Amateur Theatre since 1899

NATIONAL OPERATIC AND DRAMATIC ASSOCIATION
Headquarters: NODA House, 58-60 Lincoln Road, Peterborough. PE1 2RZ
Telephone: 0870 770 2480 • Fax: 0870 770 2490 • Email: everyone@noda.org.uk

The National Operatic and Dramatic Association (NODA), founded in 1899, is the main representative body for amateur theatre in the UK. It has a membership of some 2500 amateur/community theatre groups and 3000 individual enthusiasts throughout the UK, staging musicals, operas, plays, concerts and pantomimes in a wide variety of performing venues, ranging from the country's leading professional theatres to village halls. Members have access to a wide range of benefits.

NODA is divided into eleven national Regions, each headed by an Region Councillor who sits on the Council (the ruling body of the Association), supported by a network of Regional Representatives and other volunteers. These volunteers are the vital link to the grass roots of the Association, the amateur theatre companies themselves. The Association is administered from its Headquarters in Peterborough,


with a knowledgeable and friendly staff able to deal with virtually any enquiry relating to amateur theatre.

There is a broad spectrum of ages involved with amateur theatre nationwide, from a burgeoning number of youth groups to adult companies, which meet the needs of all levels of both performers, whether dramatic or musical, and enthusiasts involved backstage, front of house or in administration.

NODA AIMS

- To give a shared voice to the amateur theatre sector.
- To help amateur societies and individuals achieve the highest standards of best practice and performance.
- To provide leadership and advice to enable the amateur theatre sector to tackle the challenges and opportunities of the 21st century.

www.noda.org.uk



Celtic Computer Systems

- Hardware - Software - Upgrades -
- Repairs - Maintenance - Books -
- New & Recon Complete Systems -

Telephone 01873 858111

Email: celticcomputers@uwclub.net

One-to-one tuition in:

- Piano
- Keyboard
- Guitar
- Bass Guitar
- Banjo
- Rock & Pop Vocals
- Musical Theatre
- Saxophone
- Flute
- Music Theory
- Drums

Wishing APC the best of luck for 2013



Telephone: 01873 855050
Email: info@mayzmusik.co.uk
Web: www.mayzmusik.co.uk

Classes available in:

- GCSE/A-level
- Performing Arts
- GCSE/A-level Dance
- Ballet
- Tap
- Jazz/Modern Dance

Registered Exam Centre For:
• WJEC/AQA GCSE's & A-levels
(Centre 68325)
• RockschooL Ltd Instrumental &
Vocal Grades (Centre 4342)

tutors are:
• Fully Trained
• Qualified
• CRB Checked

Dorrell Oliver Ltd

Chartered accountants

Linden House, Monk Street, Abergavenny, Monmouthshire
Tel: (01873) 852113 Fax: (01873) 858523 www.dorrells.co.uk

ADVICE FOR:

- TAX • NEW BUSINESSES • ACCOUNTANCY •

now available!

Pomegranate
Creative



LARGE format banners, posters, signage & laminating
All designed & produced on site!!

still producing...

- advertising & design
- brochures & literature
- posters & flyers
- corporate identity
- branding
- business cards



Pomegranate Creative, Unit 3, Station Enterprise, Station Road, Abergavenny
Tel: 01873 850977 Mail: info@pomegranatecreative.co.uk
Web: www.pomegranatecreative.co.uk

GARETH WILLIAMS

CONTACT LENS
OPTOMETRISTS

PRACTITIONERS

JOHN PARRY

16 BEAUFORT STREET, BRYNMAWR

TEL: 01495 311555

PRACTICE ALSO AT ABERTILLERY

*Professional Eyecare
for the Whole Family*

LARGE RANGE OF
DESIGNER FRAMES AVAILABLE
CONTACT LENSES TO SUIT
EVERYBODY'S REQUIREMENTS

Monday 15th to
Saturday 20th April 2013

AAODS

presents

CHESS

Music by

Benny Andersson and Björn Ulvaeus
(of ABBA fame)

Lyrics by Tim Rice

Based on the idea by Tim Rice

As the US and Russian chess masters battle it out for supremacy, both in the game and for the love of a beautiful woman, the politicians use the game for their own purposes. Featuring the hit duet 'I Know Him So Well' & the chart-topping 'One Night in Bangkok'.

BOOK YOUR TICKETS EARLY 01873 850805
www.aaods.co.uk



We are proud to be the main sponsors for
Abergavenny Pantomime Company's
production of



Aladdin

*Enjoy food served with
flair & fine wines in a
stylish atmosphere*

- *Lounge*
- *Pre-theatre Dining*
- *High Quality
Accommodation*



TELEPHONE (01873) 853575
59 Cross St. Abergavenny. Monmouthshire



If you would like to be our main sponsor for our 82nd year, then please contact
Carolyn Wallace, publicity officer. Email: wallace@24hollywell.freeserve.co.uk.
Try our website for news & photos: www.abergavennypantomime.co.uk



PROGRAMME DESIGNED & PRINTED BY B&N PRINTERS, ABERGAVENNY